



A celebration of female professionals

Tribute offers insight into careers of 27 honorees

The Shelby Report of the Southwest presents its 21st annual tribute to Women of Influence in the food industry. This year's slate of honorees – 27 strong – runs the gamut from presidents and VPs to managers, directors and supervisors.

They are among the leading executives in their respective fields, but their candid responses to questions from the Shelby team also reflect how they handle their other roles – as wives, mothers, sisters and even grandmothers.

Whether they've worked there decades or just a few months, these women

are making an impact at their companies. Some have MBAs or law degrees, while others are pursuing doctorates. Nearly all belong to professional associations and are active in their communities.

In the pages that follow, they share advice for up-and-coming professionals, as well as detail some of the challenges and rewards they've experienced along the way. In addition, you'll learn about the defining moments in their careers.

We found their responses refreshing and inspirational, and hope you will as well. Join us as we celebrate the 2026 Women of Influence.





Angela Ables
Brookshire Grocery Co.

Store Director

Angela Ables leads with integrity, resilience and an unwavering commitment to excellence. She sets high expectations for herself and her team, driven by a genuine desire to deliver the very best for her store, employee-partners and customers. She does not compromise standards; she elevates them.

A proven, results-driven leader, Ables consistently delivers exceptional performance. Her store's two-year stacked sales increase is three times the company average and current-year sales are trending 2.7 percent above the banner average.

She achieves these results through disciplined execution, strong team engagement and a relentless focus on operational excellence. Ables models the company's core values daily, setting the tone for accountability, ownership and high performance.

Her resilience is equally defining. Following a car accident, she demonstrated extraordinary determination. Throughout her recovery, she

remained focused on her team, returning in time to support her store during the Fourth of July holiday. That commitment reflects not only her resilience but her servant leadership mindset.

Beyond store operations, Ables invests in her community, volunteering at Comanche Rehab, supporting National Night Out and contributing to an annual chili supper for local hunters. She does more than manage a store; she exemplifies courageous leadership, operational excellence and an unwavering commitment to winning a customer's business the right way.



Emilee Albright
Schraad Sales and Marketing

Category Insights Manager

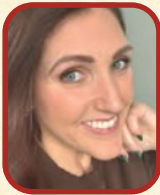
Emilee Albright is a data-driven leader who brings strategic insight and analytical expertise to category management. In her current role, she transforms complex market data into actionable strategies that drive measurable business growth.

Through advanced analytics, cross-functional collaboration and a deep understanding of consumer behavior, she helps guide category strategy and strengthen product positioning to uncover new revenue opportunities for both clients and retail partners.

Albright plays a key role in translating insights into clear, impactful business decisions. By analyzing syndicated data, market trends shopper behavior, she provides teams with the clarity needed to prioritize opportunities and execute strategic plans with confidence. Her ability to connect data with storytelling helps align teams across sales and marketing leadership around shared growth objectives.

Her leadership style emphasizes curiosity, accountability and continuous learning. Albright works to create an environment where teams feel empowered to ask questions, explore insights and use data to guide decision-making. Through training and collaboration, she helps colleagues better understand how to leverage insights tools.

Outside of work, she is committed to building community. From hosting weekly gatherings to supporting neighborhood initiatives such as a community garden and local service projects, she invests in creating connection and support within her community.



Beth Atkinson-Keeton
Elephant House PR

President

Professional Achievements: • 14 years in the produce industry • Founded Elephant House PR in 2021, specializing in the produce industry with clients such as Natural Delights, ¡Yo Quiero! Brands, Nature Fresh Farms, Frieda's, Taylor Farms, Onions 52, Bolthouse Fresh, Bako Sweet, CMI Orchards,

Offshoot Brands and others, aiming to drive the consumption of fresh produce. • Elephant House has earned over 150B+ media impressions and 8,000+ media placements and has engaged over 500 media and influencer contacts. • Clients have been featured in outlets such as Women's Health, Good Housekeeping, TODAY, DREW, Washington Post, USA Today, Prevention, Parade and many more. • Earned Top Women in PR Award in 2025 from PRNews for her work in the produce industry • Graduate of the International Produce Association's Leadership Class (Class 28), demonstrating her dedication to advancing leadership in the produce

sector • Has spoken at the Global Produce & Floral Show, Women's Fresh Perspectives Conference and other fresh produce industry events as an expert in her field • Mentored 60+ registered dietitians through Experts With Influence, a program that she supports as a guest speaker • Worked at top agencies such as DGWB in Santa Ana, CA and DMA Solutions in Dallas, TX prior to starting her own company in 2021

Industry and Community Activities: • Graduated the International Fresh Produce Association Leadership Program and has served on boards and committees as a key mentor and advisor.



Liz Bleakley
St Pierre Bakery

Global Head of Public Relations and Communications

Liz Bleakley joined St Pierre Groupe in 2020. Her influence spans the entire organization in markets including the UK, Ireland, UAE, Spain and the United States, where she shapes brand reputation, corporate narrative and

stakeholder engagement.

Bleakley leads global PR strategy while managing agency partners, budgets and trade advertising across the UK and U.S. She develops communications that resonate with trade, consumer and B2B audiences, supporting brand perception and commercial performance.

In 2025, Bleakley delivered several high-impact projects that elevated brand visibility. She led the U.S. PR launch of the "Eat Avec Respect" platform, creating a news-led strategy built on original research into American perceptions of French culture. A filmed stunt in Venice Beach

brought the story to life, generating 70 pieces of coverage across major outlets including the *New York Post*, Yahoo and *The Sun U.S.*, while also providing valuable content for social channels and customer presentations.

Bleakley also played a key role in the brand's largest-ever activation at IDDBA 2025, securing 15 pieces of trade coverage with major U.S. publications, further cementing the brand's leadership within the category. Through creative thinking, strategic insight and strong leadership, she consistently delivers communications that strengthen reputation and drive commercial impact.



Misty Bryant

Director of Retail Operations



Shannon Clark

Senior Director of Marketing & Communications



Candace Henderson

Merchandising & Operations Support Manager



Courtney Meador

VP of Human Resources



Houchens Food Group
 proudly congratulates our winners
 of the **2026 Women of Influence**
 in the Food Industry award.



CONGRATS



2026 WOMEN OF INFLUENCE

The Made in Oklahoma Coalition proudly congratulates Amanda Emerson, on being named a *Shelby Report* Women of Influence honoree. This well-deserved recognition reflects her exceptional leadership, dedication to the industry, and meaningful impact both professionally and within our community. Amanda's work with Head Country and her service on our board continue to elevate and strengthen Oklahoma's food and agriculture sectors. We are honored to celebrate this achievement and grateful for the influence she brings to our organization and beyond.

-Made in Oklahoma Coalition



Amanda Emerson



The United Family is proud to congratulate five outstanding team members who were recognized by *The Shelby Report* as Women of Influence in the food industry.

Their dedication, leadership, and commitment to excellence make a meaningful impact on our company and the communities we serve across Texas and New Mexico.

We are honored to celebrate their achievements!

The United Family™





Sarah Boddy
St Pierre Bakery

Managing Director

Sarah Boddy has driven exceptional growth, international expansion and cultural transformation at St Pierre. In the last 12 months, her leadership delivered standout commercial and organizational progress.

In the United States, Boddy established a new sales structure and

appointed a general manager to accelerate growth. Under her leadership, the U.S. business achieved more than 18 percent sales growth in 2025, securing major listings with Sam's Club, H-E-B and WinCo, while also winning the brand's first Publix listing for 2026.

These results were achieved despite tariff pressures, market volatility and a declining bakery category, supported by the launch of the brand's first above-the-line campaign, "Eat Avec Respect."

Boddy also expanded the brand's international footprint, guiding a newly established team to launch in multiple new markets, with one territory delivering 291 percent of budget.

Alongside commercial success, Boddy strengthened company culture and purpose. Employee engagement rose to 83 percent in the annual survey, with significant gains in integrity, communication and development. She also embedded CSR into the business plan, with the team exceeding volunteering targets and delivering 121 days supporting community initiatives.

Through strategic leadership, commercial expertise and a deep commitment to people and purpose, Boddy continues to drive sustainable growth and position St Pierre for long-term success.



Jessica Brown
Brookshire Brothers

CFO

Jessica Brown's promotion to her current role this year marked an historic milestone as the first female executive officer in the organization's history. She previously served as VP of accounting and treasury for 15 years.

Brown's journey within the company reflects both dedication and distinction, having advanced through a series of increasingly impactful leadership roles, including staff accountant, financial analyst, general ledger manager, assistant controller and controller.

With a depth of experience spanning the full spectrum of finance and accounting, Brown has cultivated a strong and steady foundation in financial leadership. Her expertise includes strategic planning, acquisitions, corporate refinancing and operational oversight, all guided by both her academic training and years of hands-on experience.

Known for her thoughtful, measured leadership style and unwavering commitment to excellence, Brown brings a practical yet forward-thinking approach to financial management – qualities that position her well in her new role as CFO.

Beyond her professional accomplishments, Brown is a wife and mother of three. She treasures time spent with her family and remains connected to her community, embodying the same care and commitment in her personal life that she brings to her work.



Kaela Canzoneri
Brookshire Grocery Co.

Store Director

Kaela Canzoneri exemplifies BGC's core value of competitive grit. Amid staffing challenges, she successfully led and opened a new store, building a strong, motivated team through consistent communication, clear expectations and hands-on leadership.

Canzoneri is equally committed to developing others. She leads by example, investing in training and mentorship that has resulted in six assistant store managers being promoted to store director from her store. She ensures her leadership team understands inventory performance and profitability drivers, empowering them to take ownership of results. Her results speak for themselves.

Under Canzoneri's direction, her store has ranked in the top three company-wide for chocolate strawberry sales for three consecutive years and has led the company in King Cake sales during that same period. She quickly surpassed initial financial projections and continues to drive strong sales

growth through disciplined execution and high merchandising standards.

Canzoneri's customer focus is unwavering. She creates meaningful connections, responds to concerns within 24 hours and fosters a culture where no customer is overlooked. She knows many customers by name and sets the tone for service excellence throughout her store.

Beyond the business, Canzoneri supports her community through involvement with a local food bank, Boys & Girls Club, Red River Revel, Barksdale Air Show and other initiatives. She is a proven leader whose impact extends far beyond her store walls.



Nellie Carlson
Schraad Sales & Marketing

Senior Director of Retail Strategy

Nellie Carlson is a strategic and results-driven leader with more than 21 years of experience in the CPG industry. In her current role, she oversees retail operations across key markets, including all of Texas, as well as a major Midwest-based account. She manages relationships with multiple top-20

clients, ensuring retail execution consistently meets key performance objectives and delivers measurable value.

Carlson has led transformative changes to the retail team's structure across Texas. Within her first four months, she implemented a dedicated retail coverage model that increased field coverage by more than 50 percent in the first month alone. She also directed the launch of five new retail-only contracts, creating immediate momentum and opening additional opportunities for client representation in 2026.

Carlson's leadership is grounded in strong communication, collaboration and operational discipline. She identified opportunities to

improve how field teams structure store-level tasks, allowing representatives to focus on high-impact execution while generating more meaningful insights for clients.

With five direct reports and more than 30 indirect field team members, Carlson prioritizes training, process improvement and knowledge sharing to build high-performing teams. Through continuous evaluation of reporting and strategy execution, she ensures her teams remain focused on delivering measurable results and long-term growth for clients and the organization.

a toast to you & your success

Congratulations to our partner, Beth McGough of Giant Eagle, on being named a 2026 Women of Influence Award recipient.

Proud Partners in Deli



PREMIUM MEATS | ARTISAN CHEESES





STRONG LEADERS. REAL IMPACT.



KATIE PENNY
EXECUTIVE VICE PRESIDENT
OF STORE OPERATIONS
KNOXVILLE DIVISION



MISTY DESKINS
SENIOR DIRECTOR
OF MARKETING



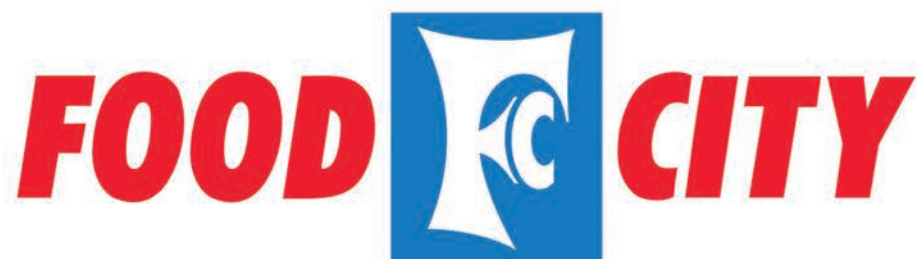
HANNAH SMITH
DIRECTOR OF FRONT
END OPERATIONS



MISTY KERN
DIRECTOR OF TRAINING

INFLUENCE THAT MOVES GROCERY FORWARD.

Every day.





Kindle Chapman

Brookshire Grocery Co.

Director of Financial Planning and Analysis

Kindle Chapman plays a critical role in guiding enterprise-level financial strategy and decision-making. She leads the annual planning process, produces

executive and board-level financial analyses and develops valuation models that support major capital investment decisions.

Chapman has been recognized for her leadership, intellectual rigor and collaborative approach. She manages and mentors a team of analysts, tailoring her leadership style to support individual growth while maintaining high standards of accuracy and accountability. Business partners across the organization consistently seek her counsel for her ability to translate complex financial data into clear, actionable insights that drive results.

In 2023, Chapman received BGC's Rising Star award, which recognizes a retail support employee-partner under the age of 40 who has made a significant impact during their short time with the company. She received three separate nominations for this award, which was more than any other employee-partner in the company.

In addition to her professional impact, Chapman serves as VP of East Texas for the Texas Society of CPAs.



Crystal Dominguez

United Supermarkets

Store Director

Crystal Dominguez leads the United Supermarkets store in Muleshoe, Texas, where her steady, hands-on leadership has strengthened both her team and the store's performance. This year, her store reached a major milestone,

achieving a higher store rating for the Muleshoe location for the first time since 1996. Average weekly sales numbers were up, reflecting her focus, consistency and belief in what her team can accomplish together.

Dominguez works with her leaders to build smart labor schedules, protect service standards and keep the store running smoothly without placing strain on her team. She is committed to developing people, encouraging managers to learn across departments so they can support the store as a whole. Her willingness to teach, guide and challenge her team has created confident, capable leaders who feel supported and valued.

Dominguez's leadership is rooted in service. She rolls up her sleeves, works alongside her team and sets the tone for the entire store. Her presence builds trust and inspires a culture where everyone takes pride in their work and feels ownership in the store's success.

Dominguez's impact extends far beyond the store. She serves on the Muleshoe Heritage Foundation board and the CTE Advisory Committee and supports groups such as Muleshoe Fine Art, athletic booster clubs, the local food bank and multiple charity events. And her store has been recognized by community partners for its consistent support and kindness.



Amanda Emerson

OWS Foods

Chief Innovation Officer

Amanda Emerson has evolved into one of the most effective and thoughtful leaders in the food industry. She has proved herself to be an exemplary executive who possesses the rare ability to marry data-driven strategy with

deep, human-centric leadership.

In her current role, Emerson has been the architect of transformative growth. Her whole-picture leadership style was instrumental in scaling Head Country BBQ from a regional powerhouse to a national brand.

Beyond the P&L, Emerson's brilliance lies in her ability to identify and maximize each team member's zone of genius. She takes it upon herself to mentor future leaders in our industry, fostering a performance culture rooted in accountability and creative freedom.

Emerson's influence extends far beyond the boardroom. Her career is

marked by a deep-seated commitment to civic duty, including her impactful work with Shriners Hospitals for Children and the Burn Camp community. Whether she is serving on the board of the Made in Oklahoma Coalition or spearheading industry safety campaigns, she leads with a hands-on, all-in approach.

Emerson is the definition of a Woman of Influence: a results-oriented visionary who elevates her brands, colleagues, community and every project lucky enough to have her on board.



Taylor Escamilla

King Soopers/City Market

Division Floral Specialist

Taylor Escamilla plays a meaningful role in driving and elevating her team. She leads with optimism and high energy, pairing a driven mindset with a genuine

commitment to supporting and elevating those around her.

Escamilla is a courageous and curious leader. Recognized by her organization as a high-potential leader, she was selected to attend the Food Industry Management program at the University of Southern California, an investment in her continued growth and future leadership impact.

Escamilla is committed to developing others and expanding her influence as a leader in the evolving food industry.



Congratulations to our 2026 Women of Influence!

Thank you for your dedication to our member retailers and the communities they serve.



Lori Turner

Executive Director of Communications, Board and Member Relations



Heather Standifer

Executive Director, Advertising, Marketing & AIM



Shelly Moore

Senior Vice President, Chief Information Officer





Deb Allison
Store Manager



Farah Lavigne
Store Manager



Justine Meader
Store Manager



Brittany Vogel
Store Manager

Congratulations to Deb, Farah, Justine, and Brittany for being recognized as 2026 Women of Influence.

Thank you from all your Hannaford colleagues.

Your commitment to our customers and our associates serves as a model and an inspiration to everyone at Hannaford.





Sabrina Fair
United Supermarkets

Replenishment Manager

Sabrina Fair plays a vital role in keeping The United Family's fresh departments running smoothly every day. She leads the team that ensures 100 stores across Texas and New Mexico are stocked with the high quality meat, deli and bakery items guests rely on.

Fair's work requires constant coordination, smart forecasting and a deep understanding of how to balance freshness, availability and waste. Thanks to her steady leadership, stores receive what they need on time and with the quality guests expect.

Fair's influence reaches far beyond her team. The decisions she guides shape the guest experience, support store teams and protect the company's financial health. She leads a specialized group of buyers and quality control experts, helping them grow while maintaining high standards across multiple departments.

This past year, Fair delivered exceptional results while navigating the company's complex system conversion. She kept her team focused, maintained strong service levels and ensured stores never felt the strain of the transition. Her attention to detail and commitment to freshness helped the company move forward without sacrificing performance.

Beyond her professional accomplishments, Fair has volunteered with Meals on Wheels for more than 25 years and is active in her church community. Her 26-year career with The United Family reflects loyalty, excellence and a genuine commitment to serving others.



Marty George
United Supermarkets

Store Director

Marty George leads the Albertsons Market in Roswell, New Mexico, where her years of experience and genuine care for people have shaped not only a high performing store but a place that's truly part of the community. This year, she celebrated 36 years with Albertsons, an incredible milestone that

reflects her dedication and the trust she's earned from both her team and her community.

George brings creativity and energy to store events and local celebrations, using them to build excitement and strengthen guest engagement. Her ability to plan and execute these moments with care keeps the store running smoothly and ensures guests feel welcomed and valued.

George is equally committed to developing her people. She encourages leaders to grow, supports them through challenges and creates an environment rooted in accountability, respect and teamwork. Her store maintains one of the lowest turnover rates in the area, a reflection of the

stability and encouragement she provides.

Her experience navigating complex situations, including union elections and contract negotiations, has shaped her into a thoughtful decision maker. Her background as a grocery buyer gives her a unique eye for merchandising and local marketing.

George's impact extends far beyond the store. She volunteers with organizations such as Loaves and Fishes, the Community Kitchen of Roswell, Keep Roswell Beautiful and the local food bank and has served on the United Way board since 2015.



Alexandra Hickey
C.A. Fortune

VP of Natural Strategic Partnerships

Alexandra "Alex" Hickey exemplifies the leadership, innovation and industry commitment recognized by the Women of Influence program. With nearly 20 years in the grocery industry, she has consistently delivered results while building strategies that advance her teams, clients and organizations.

Hickey is known for pairing strategic thinking with disciplined execution, translating complex challenges into clear plans that drive growth and lasting business impact. Her leadership balances accountability with empowerment, enabling teams to perform at a high level while continuing to develop professionally.

Hickey's career progression – from merchandise coordinator to category merchant at Whole Foods Market to leading high-performing sales organizations at C.A. Fortune – reflects both depth of expertise and intentional growth.

Along the way, she has cultivated a rare blend of merchant intuition, consumer insight and commercial rigor. This perspective distinguishes her as both a thought leader and an execution-focused operator who not only anticipates where consumers and categories are heading but helps build the frameworks required to win.

Hickey brings a forward-looking approach to category strategy, retailer engagement and organizational development, ensuring her teams are positioned for success in an increasingly competitive marketplace. She recognizes that sustainable growth requires agility and alignment.



Amber Hook
United Supermarkets

Director of Talent Management

Amber Hook is a compassionate leader whose work touches every corner of The United Family. In her current role, she helps guide the experience of more than 18,000 team members, from hiring and onboarding to performance support and culture building.

Hook leads a dedicated team, supports managers through challenging situations and ensures team members are treated with fairness and respect. Her role also includes overseeing key systems, engagement programs and store visits that keep her connected to the people she serves.

Hook's influence is felt company wide. She partners with leaders at every level, helping shape the environment where team members work, grow and feel supported. This past year, she played a central role in Project Unity, the transition to ACI systems. She helped prepare data, build training plans and guide store teams through a complicated change, all while keeping daily talent management operations running smoothly.

Hook's team achieved a high unemployment claim success rate, negotiated a new four year union contract and led major hiring efforts, including bringing nearly 300 new team members onboard for the Rio Rancho Market Street opening. They also refreshed recruiting materials and awarded six educational scholarships.

Outside of work, Hook serves in leadership roles with SHRM, Kairos Prison Ministry, Lubbock Impact and Ronald McDonald House Charities and volunteers through UCrew.

CONGRATULATIONS

**HONORING EXCELLENCE.
 CELEBRATING IMPACT.**



Angela Ables
 Store Director



Kaela Canzoneri
 Store Director



Kindle Chapman
 Director of Financial
 Planning and Analysis



Macaela LeClair
 Category Manager



Becky Schaeffer
 Senior Manager of
 Facility Services Finance



Lisa Tiblow
 Store Director





WE ARE PROUD TO HONOR OUR 2026

Women of Influence



SYDNEY RUGGIERI



EMMY HUME





Lisa Lam
Schraad Sales & Marketing
Retail and Data Systems Specialist

Lisa Lam's influence comes from her ability to solve complex operational challenges while enabling others across the organization to succeed. In her current role, she designs and maintains the retail execution infrastructure

that connects field activity to measurable business outcomes.

Lam's work ensures field teams focus on the right stores, leadership has reliable data for decision-making and execution strategies translate into results. In just a few years in the industry, she has demonstrated exceptional results-oriented performance.

Lam led the rebuild of the company's retail execution "Route List" infrastructure, standardizing how more than 5,800 stores connect to 95 territories and multiple customer and distributor networks. This transformation reduced manual data reconciliation by about 96 percent,

saving teams an estimated 15-20 hours each week while improving store coverage visibility from about 60 percent to more than 85 percent.

Lam's leadership is grounded in collaboration, mentorship and clarity. She partners with sales, retail operations and analytics teams to ensure systems reflect how people work in the field. She also maintains internal documentation and mentors peers and new hires, helping preserve institutional knowledge and build solutions that strengthen the organization over time.



Macaela LeClair
Brookshire Grocery Co.
Category Manager for Deli and Prepared Foods

Macaela LeClair is an innovative, results-driven leader whose impact at BGC reflects the qualities celebrated by the Women of Influence award. In her current role, she oversees assortment planning, pricing, promotions,

merchandising, forecasting, vendor partnerships and long-term strategy across five banners. Her disciplined focus on quality, efficiency and customer experience consistently delivers above-market performance.

Over five years of driving category growth, LeClair has combined strong analytical skills with deep consumer insight to achieve measurable results. She increased deli sales 3 percent year over year through optimized assortment and pricing strategies, and her creation and rollout of a new deli meal program generated \$8 million in incremental revenue in its first year.

LeClair's ability to interpret shopper and market data keeps her

categories competitive and positioned for sustained growth. She strengthens profitability through strategic vendor partnerships, skillful negotiation and impactful promotional programs. Her leadership has improved execution, consistency, freshness and availability across the enterprise.

Committed to excellence, she pursues advanced industry training and regularly visits stores to ensure planogram compliance, gather feedback and uphold high standards.

LeClair's vision, leadership and results make her a standout leader whose influence elevates both BGC and the grocery industry.



Casey Martin
Schraad Sales & Marketing
Senior Client and Customer Support Analyst

Casey Martin is a strategic operations leader focused on strengthening client experience through scalable systems, empowered teams and operational excellence. In her current position, she plays a critical role in ensuring the company's rapid growth is supported by a strong operational foundation that

allows teams and clients to succeed.

Recognizing that sustainable growth required a more structured support framework, Martin led the restructuring of the customer service and orders department. She implemented scalable processes, developed training programs and authored operational guides that help team members better understand their roles and consistently deliver value to clients. Her work has helped transform the department into a more proactive and reliable partner for both internal teams and external stakeholders.

Martin also leads new client onboarding and serves as a trusted resource

for complex vendor and customer challenges. By analyzing workflows and identifying operational gaps, she continually refines processes that improve efficiency, strengthen communication and reduce the risk of critical details being missed.

Her leadership philosophy is rooted in the belief that customer service is a direct reflection of a company's values. By investing in people, strengthening systems and fostering collaboration across teams, Martin helps create an environment where service excellence drives stronger partnerships and long-term organizational success.



Chesley Maschhoff
Lottie's Meats
Co-founder

Chesley Maschhoff is a Culinary Institute of America-trained chef and sixth-generation farmer's daughter who is rewriting the rules in America's most traditional – and historically male-dominated – industries of culinary, meat

and agriculture.

Lottie's Meats is a chef-crafted pork sausage brand Maschhoff launched with her sister in 2024. She brings her background as former sous chef at Annette Scratch to Table to a category overdue for a shake-up.

While navigating the male-dominated co-packing world, she has held firm on her standards – insisting on premium pork loin and shoulder cuts and refusing to compromise on clean, all-natural ingredients despite industry pushback. The result: a sausage product with 50 percent less fat, zero nitrates or fillers and flavors that have earned a loyal following.

Maschhoff's leadership extends beyond the product. Lottie's Meats is a 1 percent for the Planet member, and a portion of every sale supports organizations such as the Women's Bean Project, which creates employment pathways for women facing significant barriers. She is committed to amplifying female founders and keeping women – who so often power businesses from behind the scenes – visible and celebrated.

In an industry that has long underestimated women from the farm and the kitchen, Maschhoff is building something that honors both – and refuses to apologize for the quality it demands.

The Women Moving the Industry Forward

Congratulations to C.A. Fortune's Women of Influence who are recognized for leadership, impact, and raising the bar across our business and beyond.



Darla Deiro
 Director,
 Conventional
 Sales

Alex Hickey
 VP, Natural
 Strategic
 Partnerships

Caitlyn Koriakos
 Sr. Director,
 Sales Ops

Barb McGlothlin
 VP,
 E-Commerce

Nicole Teeters
 SVP, Strategy,
 SRW | C.A.

Nery Vazquez
 SVP,
 DTH | C.A.

Kate Weidner
 Chief Creative
 Officer,
 SRW | C.A.

Let's build what's next.

CAFORTUNE.COM



We're proud to celebrate Schraad's Women of Influence and all of the 2026 honorees.



NELLIE CARLSON
Senior Director of Retail Strategy



KACY SPRINGER
Creative Development Project Manager



CASEY MARTIN
Senior Client & Customer Support Analyst



EMILEE ALBRIGHT
Category Insights Manager



LISA LAM
Retail & Data Systems Specialist



NICKI ZUBER
Business Development Manager

Congratulations!



Jennifer O'Malley

St Pierre Bakery

Senior Sales Manager

Jennifer O'Malley joined St Pierre in 2023 with more than a decade of CPG experience across leading brands such as Pirate's Booty, Green Giant,

Snapple and Kettle Chips. In March, she was promoted to her current role in recognition of her strong commercial impact within the U.S. business.

O'Malley manages the brand's East Coast territory from Maine to Florida, driving distribution growth and strategic partnerships with major distributors including Bozzuto's, C&S, UNFI and KeHE, alongside regional retailers such as Wakefern, Food City, Big Y and Ingles.

In the last 12 months, O'Malley has delivered exceptional results by expanding white space opportunities and accelerating growth within existing

accounts. Through strategic planning and strong partner relationships, she achieved double-digit growth across nearly every account in her territory while positioning the region for continued expansion.

O'Malley also demonstrates strong commitment to community impact. In 2025, she completed a triathlon in Portland, Maine, to raise funds for the Maine Cancer Foundation through the Tri for a Cure initiative.

Through commercial expertise, resilience and purpose-led leadership, O'Malley continues to deliver meaningful growth and lasting impact.



Abie Rampy

United Supermarkets

Director of Public Relations

Abie Rampy is a thoughtful, energetic leader whose work strengthens both The United Family and the communities it serves. In her current role, she guides communication for more than 100 stores, helping people understand what the company is and how it shows up for its neighbors. She leads

external and internal messaging, serves as spokesperson and keeps team members connected through the "Spirited Culture" platform she created.

Rampy's influence reaches far beyond press releases. She oversees charitable giving, community partnerships and nonprofit relationships across all 55 United Family communities. She leads a small team focused on storytelling and community impact, ensuring the company's actions match its heart.

Over the past year, Rampy delivered standout accomplishments. She built a new system that strengthens community partnerships across all regions. She reimaged the Holiday Made Easy Expo into a hands-on,

student-driven event that boosted store traffic and engagement.

Rampy's collegiate athletics sponsorship work generated more than one million impressions from a modest investment, and she launched The Press Room to make media access easier and more accurate, contributing to significant coverage.

Outside of work, Rampy serves on university task forces, nonprofit boards and school committees. She co-founded a major holiday event and helps lead programs that support children, families and hunger relief.



Becky Schaeffer

Brookshire Grocery Co.

Senior Manager of Facility Services Finance

Becky Schaeffer provides strategic financial leadership supporting a complex, multi-state retail operation. In this role, she oversees financial planning,

forecasting and performance analysis for facility and retail support functions critical to daily store operations and long-term asset stewardship.

Schaeffer is known for her strong leadership presence, operational mindset and unwavering professionalism. She partners with operations, finance and executive leadership to balance cost control with operational effectiveness, making her a trusted advisor across the organization.

Schaeffer's results-oriented approach is evident in the rigor she brings to expense management, capital planning and vendor analysis – areas where

her work supports store performance, asset reliability and profitability. Her attention to detail and follow-through improve financial visibility and accountability, strengthening both operational execution and financial outcomes.

Beyond her technical expertise, Schaeffer leads with integrity and tenacity. She invests in her team, supports cross-functional collaboration and consistently contributes to the continued success of BGC.



Kacy Springer

Schraad Sales & Marketing

Creative Development Project Manager

Kacy Springer is a collaborative leader who bridges the gap between sales and marketing to strengthen both creative execution and business growth.

In her current role, she works across departments to elevate the quality

and impact of the organization's creative work while ensuring projects remain aligned with strategic sales objectives. Her ability to bring teams together around a shared vision helps streamline complex projects and produce stronger results for clients and partners.

In addition to her marketing leadership, Springer also contributes as a business development manager, where she is known for her solutions-focused approach to gaining and maintaining distribution. By prioritizing clear communication and strong relationships, she helps clients navigate challenges and identify opportunities that drive long-term success from farm to shelf to table.

Springer's leadership style centers on collaboration, positivity and a strong focus on people. She works to create alignment between teams that may traditionally operate separately, helping ensure ideas move forward efficiently and with shared purpose.

Outside of her professional role, Springer is committed to serving her community. She prepares and serves meals for first responders through her church, coaches girls' volleyball and softball and helps organize youth track meets. Through her work and community involvement, Springer consistently brings people together and inspires those around her.

We're So Proud



Celebrating Our Women of Influence



Michelle Bernard
Business Account Manager
Crossmark



Britney Ekerson
Customer Business Manager
Crossmark



Claudia Keyes
SVP, Operational Excellence
Acosta



Tina Kubala
SVP
Acosta



Maura Levis
VP, Northeast
Acosta



Rebekah Steward
VP, Business Intelligence
Acosta



THE
Campbell's
COMPANY

CELEBRATING THE
**2026 Women of Influence
Award Winners**



Rachel Bower

Vice President, Category Leadership
& Category Strategy,
Meals & Beverages



Melissa Bucklaw

Vice President,
Sales Execution & Planning



Angie Smith

Head of Commerce
Marketing, Snacks



Sydney Gaston

Customer Vice President,
National Grocery, Meals & Beverages



Kristen Wilson

Customer Vice President,
West Regionals, Snacks

**Congratulations to
Empire Marketing Strategies
own Kim Gustina
for winning
“The Women of Influence in
the Food Industry” award!**



Empirefoods.com

FOOD  LION

***Congratulations
to our Women of Influence Award Recipient!***



Melissa Harrington
Vice President, Finance

You *nourish* our brand, strategy and culture every day,
making Food Lion a great place to *work* and *shop*.

50
YEARS 

**LEADING WHAT'S NEXT
POWERED BY WOMEN OF INFLUENCE**

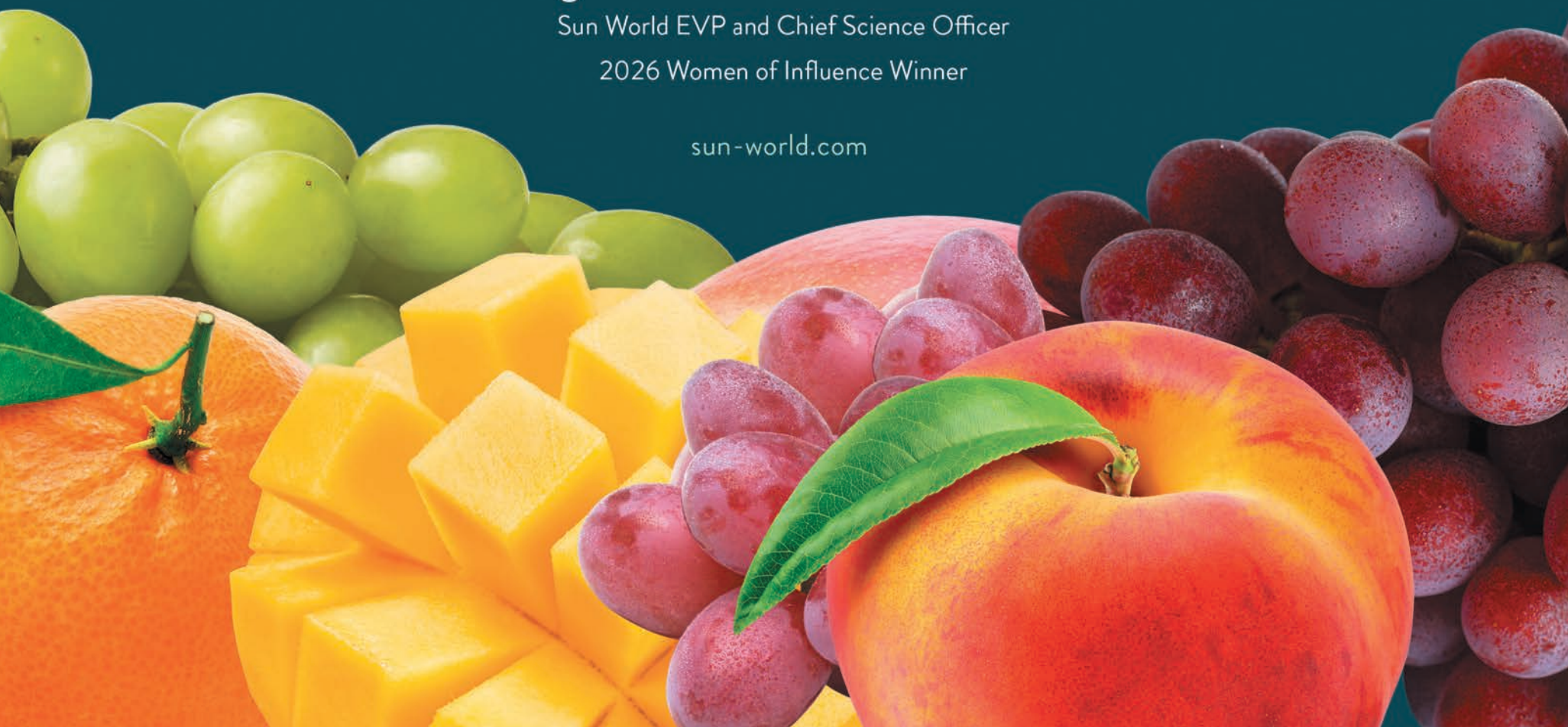


Congratulations Jennifer Petersen

Sun World EVP and Chief Science Officer

2026 Women of Influence Winner

sun-world.com





Kayleigh Swift

St Pierre Bakery

U.S. Brand Manager

Kayleigh Swift is an exceptional marketing leader whose strategic vision and results-driven approach have advanced the St Pierre brand in the U.S. In her current role, she leads the development and execution of brand

strategy across multiple channels, aligning cross-functional teams to drive measurable growth, innovation and consumer engagement.

In 2025, Swift launched the brand's global creative platform, "Eat Avec Respect," in the U.S., including its first national TV campaign. Through extensive consumer insight analysis, strategic planning and collaboration across teams, she delivered an integrated campaign spanning TV, billboards, in-store activations, sampling and expanded media investment. The campaign drove significant increases in household penetration, brand awareness and overall performance.

Swift also plays a key role in innovation, leading collaboration across insights, innovation and commercial teams to bring the brand's first limited-edition product to market. An inspiring leader, she has expanded and mentored the U.S. brand team while supporting a growing commercial organization.

Swift works with senior leadership, sales teams and major retailers, including Walmart and Kroger, to strengthen the brand's national presence. Through strategic thinking, creative execution and strong leadership, she continues to elevate the brand's visibility and growth.



Lisa Tiblow

Brookshire Grocery Co.

Store Director

Lisa Tiblow leads with passion, purpose and an unwavering commitment to her employee-partners, community and business. She began her career as a deli clerk a decade ago and advanced through multiple leadership roles

by consistently demonstrating excellence, resilience and a servant-leader mindset.

Tiblow delivers measurable results. In her first year in her current role, she increased average weekly sales by 3.8 percent while reducing labor costs and shrink – demonstrating her ability to balance growth with operational discipline. She sets clear expectations, builds strong teams and leads by example daily.

Tiblow's impact is most evident in the culture she has created. Under her leadership, her store achieved the highest improvement in partner

turnover companywide and recorded the lowest overall turnover rate last year. She fosters accountability and creates an environment where partners feel supported, valued and empowered.

Tiblow's commitment extends beyond her store through involvement with Habitat for Humanity, local schools, Junior Achievement and other community initiatives, reflecting her belief that strong businesses build strong communities.

Customer feedback consistently reflects the service culture Tiblow champions – one rooted in care, urgency and genuine connection.



Nery Vazquez

C.A. Fortune

SVP of Hispanic Marketing

Nery Vazquez leads enterprise-wide Hispanic growth strategy with deep cultural insight and a strong record of results. Since April 2025, she has overseen a 74-person merchandising team, five directors and up to 75 brand ambassadors, ensuring Hispanic marketing is integrated into corporate

growth objectives.

In 2017, Vazquez purchased DirectoHispanic after years of leading the agency and growing its impact. She later guided its successful acquisition by C.A. Fortune, securing long-term stability and expanded opportunity for clients and employees.

Vazquez has driven market expansion and multimillion-dollar contract growth, including significant expansion with a major consumer packaged goods partner in the household cleaning category in the last two years. Her work has earned national recognition, including a 2024 Silver US Agency

Award for Best Social Media Campaign.

Vazquez is known not only for results but for how she leads. In a predominantly Hispanic, women-led organization, she has built a culture rooted in integrity, transparency and inclusion. She creates space for professional growth while honoring motherhood and family leadership.

Vazquez's mentorship is reflected in the strength and longevity of her executive team, many of whom have grown alongside her for over 15 years and transitioned seamlessly into C.A. Fortune.



CONGRATULATIONS
to our 2026 Woman of Influence!



Monica Rolon
Regional Sales
Development Manager



Deb Pasternack
Senior Director,
Category Management Lead



Amy Bergeron
Sales Development Manager



Sarah Sheaffer
Sales Development Manager



Jennifer Falzon
HR Manager



Teri-Anne Colurciello
Senior Director of
Business Intelligence



Congratulations to Patrice Coudray-Rubin on being honored as a *Women of Influence in the Food Industry* award recipient. Patrice's career-long dedication to innovation, scientific excellence, and people-centered leadership has made a lasting impact on the beverage industry and the teams she leads.



Congratulations to Becca Morgan on being named a *Women of Influence in the Food Industry* award winner. This recognition celebrates Becca's exceptional leadership, sustained impact, and meaningful contributions that continue to strengthen both Niagara and the broader food industry.





Shelby Publishing has expanded its popular Women of Influence section from the Northeast to the other four regions of the nation. Look for the following outstanding female leaders from across the country to be featured in our May editions...

WEST

Catherine Gipe-Stewart
 Lorena Aguilar
 Kristin Alas
 Lisa Ali
 Shannon Beasley
 Liz Casas
 Laura Castro
 Patrice Coudray Rubin
 Darla Deiro
 Gricelda Deluna
 Erika Deschodt
 Tammy Duff
 Christy Dwyer
 Britney Ekerson
 Jeri Elsasser
 Veronica Estrada
 Martha Gabriel
 Karla Gonzalez
 Melissa Gonzalez
 Annette Gutierrez
 Carla Inama
 Teresa Jimenez
 Kimberly Johnson
 Gretchen Johnson
 Kristyn Lawson
 Katherine Lunde
 Carrie Mack
 Barb McGlothlin
 Jacqueline Michlitsch
 Karol Moorman
 Janet Moreno
 Rebecca Morgan
 Erika Mota
 Kirti Mutatkar
 Marnie Nemcoff
 Stefanie Pandol
 Nancy Paredes
 Joseph Parpart
 Jennifer Petersen
 Kori Pierson
 Carolina Pinedo
 Megan Poppe
 LeAnne Romesburg
 Sara Rueda Cuartas
 Irma Trias

Claudia Velgara
 Paige Venable
 Catrin Williams
 Danielle Wortham

NORTHEAST

Glaucia Afonso
 Debbie Allison
 Erin Baez
 Angela Basnar
 Amy Bergeron
 Patty Bianco
 Rachel Bower
 Melissa Bucklaw
 Jenna Busby
 Michelle Carfagno
 Shan Case
 Jane Ciccone
 Brandy Coccia
 Jennie Coleman
 Reimi Colson
 Tracey Colston
 Teri-Anne Colurciello
 Stephanie Doherty
 Tonya Douglas
 Hume Emmy
 Jennifer Falzon
 Jennifer Frailey-Custer
 Sydney Gaston
 Angelena Goot
 Grace Gruber
 Kathy Guertin
 Juliana Havriko
 Michelle Kalicky
 Claire Ko
 Caitlyn Koriakos
 Farah Lavigne
 Maura Levis
 Laura Viola Maccarone
 Sabrina Malloy
 Elsie Martinez
 Beth McGough
 Rachel McLaughlin
 Justine Meader
 Chrissy Michaud
 Jessica Mosner

Saeë Pansare

Deborah Pasternack
 Rachel Razzano
 Darla Rieg
 Monica Rolon
 Sydney Ruggieri
 Jordan Schenck
 Stacey Schultz
 Sarah Sheaffer
 Joelle Smith
 Stevie Smith
 Angie Smith
 Staci Smith
 Meaghan Tetreault
 Brittany Vogel
 Karen Weinstein
 Cathy Williams Owen
 Kristen Wilson

MIDWEST

Angel Anderson
 Michelle Bernard
 Casie Broker
 Dea Calkins
 Jamie Collins
 Tammy Durnan
 Azeb Gebrewihot
 Jennifer Lambert
 Kristi Magnuson Nelson
 Tara McDermott
 Shelly Moore
 Meagan Nelson
 Jessica Ringena
 Jody Rudh
 Carla Rydberg
 Natalie Santiago
 Heather Standifer
 Rebekah Stewart
 Anna Stoermer
 Jenna Sullivan
 Nicole Teeters
 Lori Turner
 Amy Wadstrom
 Kate Weidner
 Alyson Woods
 Nicki Zuber

SOUTHEAST

Susan Abernathy
 Ruth Bain
 Lindsey Baron
 Brittany Benton
 Taylor Berry
 Misty Bryant
 Lindsay Capozziello
 Jordan Carter
 Shannon Clark
 Jan Concannon
 Anna Cook
 Henley Coulter
 Rhonda DeMello
 Misty Deskins
 Geri Downing
 Meghan Edwards
 Sarah Frey
 Lucy Gibbons
 Tracey Gregorski
 Kim Gustina
 Constance Hammond
 Melissa Harrington
 Candace Henderson
 Tabitha Henry
 Elizabeth Hinson
 Karin Humanik
 Jamila Jackson
 Mary Kellmanson
 Misty Kern
 Claudia Keyes
 Tina Kubala
 Hye Suk Makley
 Sarah Matejowsky
 Sherry McBride
 Courtney Meador
 Dora Merrick
 Tish Mills
 Kara O'Malley
 Katie Penny
 Tamara Rose
 Caroline Short
 Shelby Silvia
 Hannah Smith
 Martha Taylor
 Paige Vance

CELEBRATING OUR 2026

WOMEN OF INFLUENCE

WINNERS!!!



 Giant GROW  CARE  BEL{ }NG

CONGRATULATIONS TO STOP & SHOP'S 2026 WOMEN OF INFLUENCE!



Brandy Coccia
Store Manager



Elsie Martinez
Human Resources
Business Partner



Erin Baez
Director of Operations
Support



Joelle Smith
Manager Distribution
Services



Rachel Razzano
Human Resources
Business Partner



Glauca Afonso
Store Manager



 STOP&SHOP.

